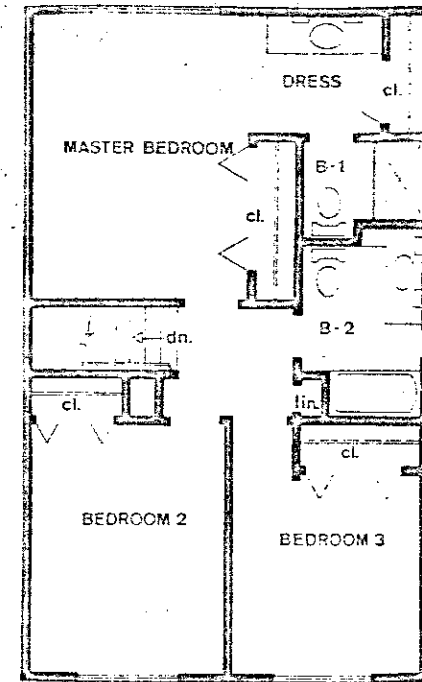
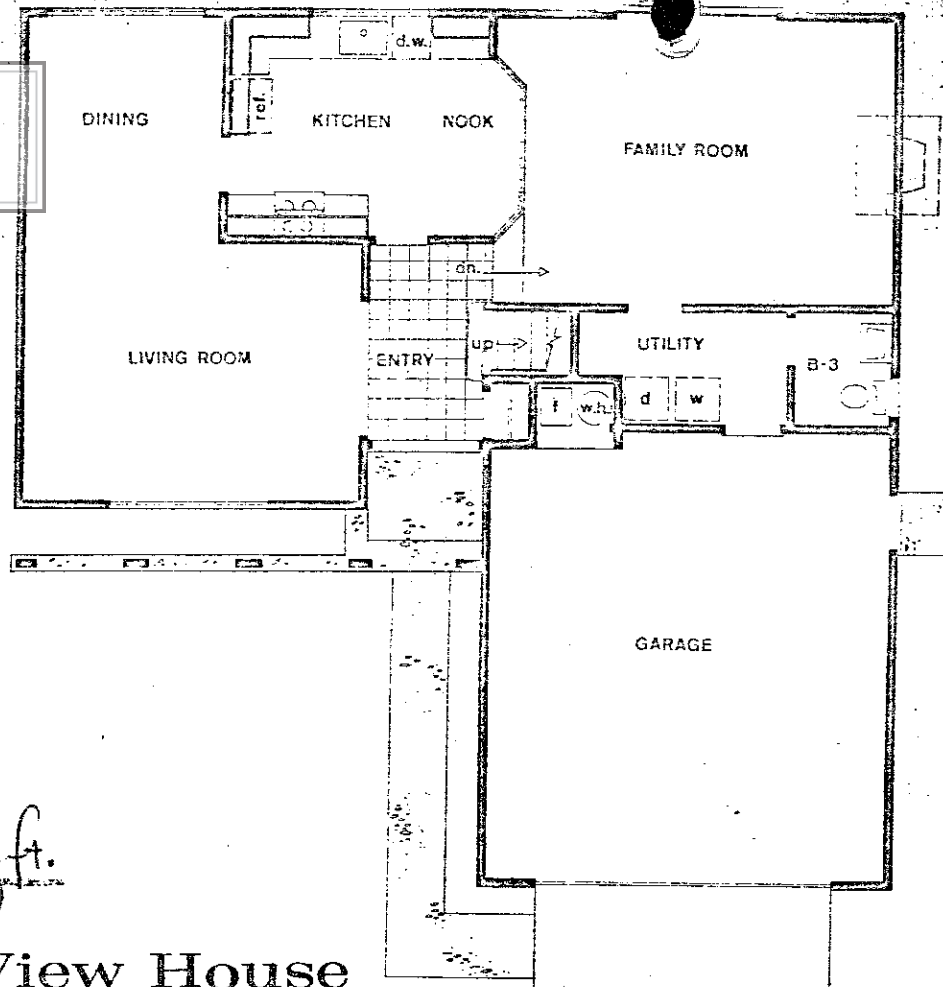


**DOUG BUENZ**  
THE 680 GROUP



1744 sq. ft.

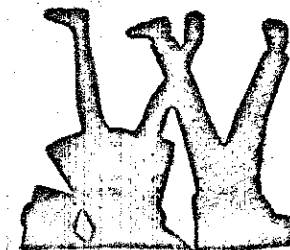
**The Valley View House**  
...A House Divided within itself  
Promotes Family Unity

6. The owners' suite is a real treat with its own dressing room, compartmented bath and two large closets.

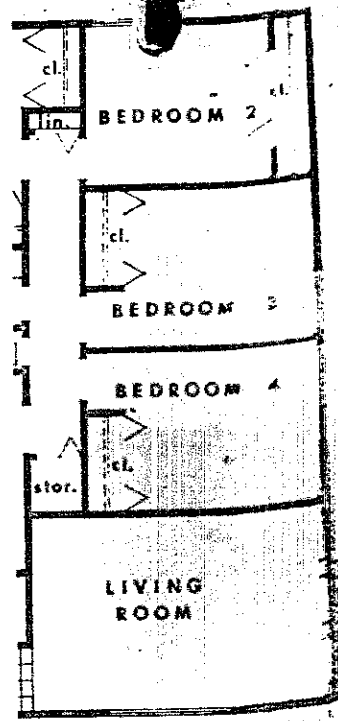
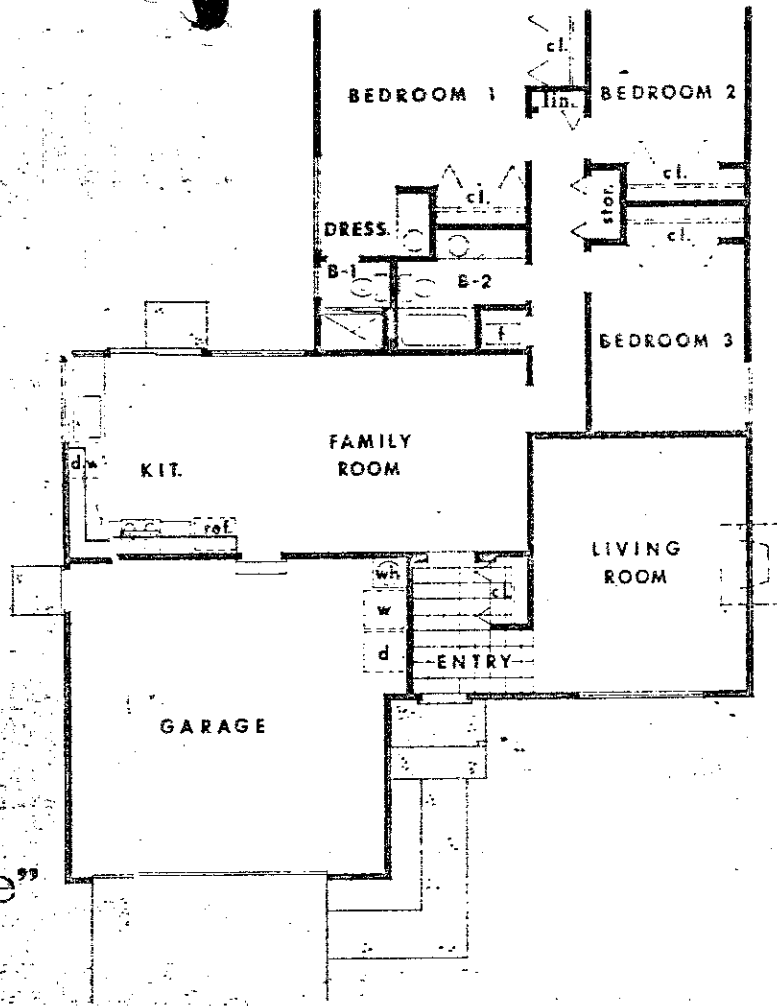
**PLUS THESE ADDED VALUES . . .**

1. Dishwasher
2. Garbage Disposal
3. Range and Oven Unit with Range Hood
4. Cultured Marble Vanity Tops

A tri-level-home thoughtfully zoned into three activity areas each of which can be reached directly from the foyer—a formal zone for adult entertaining, an informal zone for family fun and casual get-togethers, a three-bedroom quiet zone on a floor of its own for study and sleep.



**THE MEADOWFIELD HOUSE**  
 ...Space-Zoned  
 "To Live and Let Live"  
 For Harmonious Family Living



ALTERNATE  
 FOUR BEDROOM  
 PLAN

**THE FORMAL ZONE**

1. The minute you step into the gracious foyer, (into the big, sweet, direct) the wall, thought out

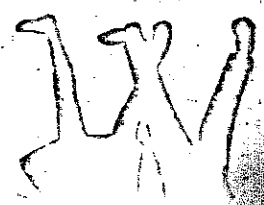
4. The kitchen puts you right where you can keep an eye on all the family activity. Plenty of counter and cabinet space, with sliding glass door

**PLUS THESE ADDED VALUES...**

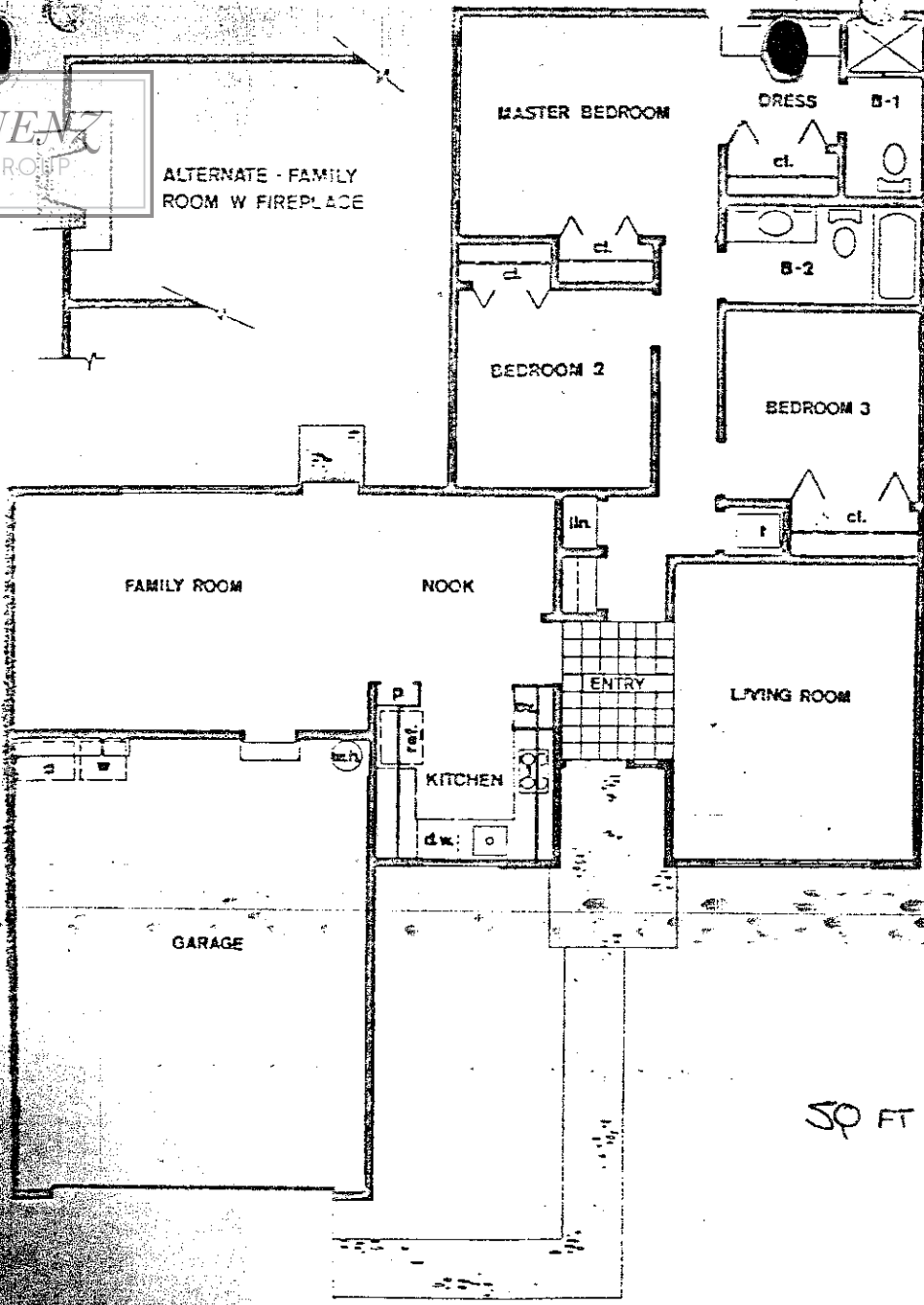
1. Dishwasher
2. Central Air

*Plan 298*

lots of... family's many activities; the large entry hall leads either into the isolated living room for adult entertaining or off into the busy family room. All the bedrooms are in a rear quiet zone for undisturbed rest and privacy.



**DOUG BUENZ**  
THE 680 GROUP



50 FT 1337

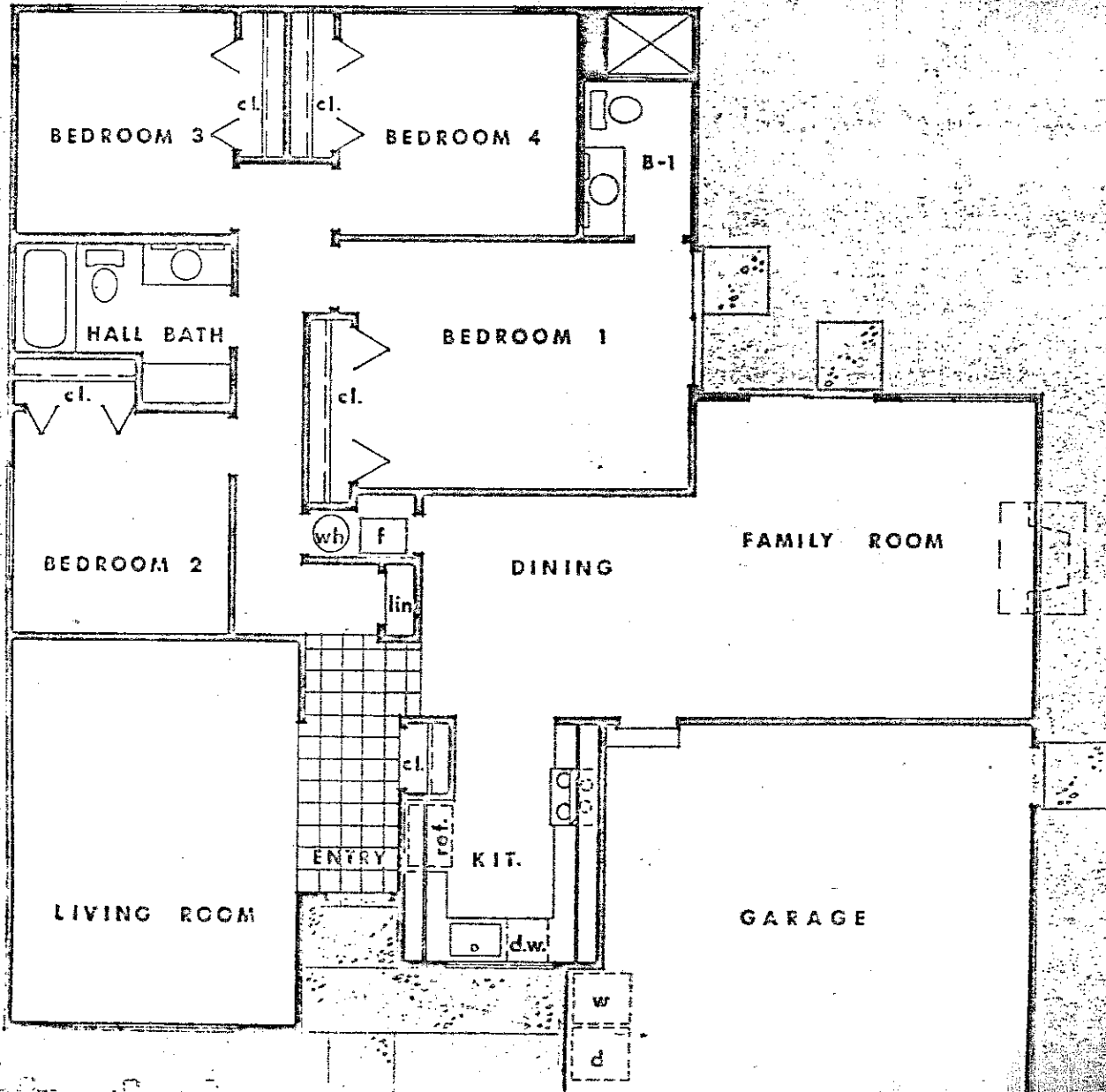
- step into the garden. Meals and snacks can be served in the cozy dining nook at the far end of the room.
4. Steps away is the wrap-around kitchen with all the latest inspirational equipment plus lots of counter space and that all-important window over the sink.
5. Even a fun-loving family needs a quiet place to read, sleep or study. That's why the three bedrooms are set-off from the activity areas of the house. The family bath is conveniently placed just a few steps from the children's bedrooms.
6. The owners' suite is an apartment unto itself with compartmented bath, good-sized dressing room and closets to hold a large wardrobe.
7. The two-car garage has a door leading right into the family room plus a laundry corner.

**PLUS THESE ADDED VALUES**

1. Dishwasher
2. Garbage Disposal
3. Built-in Range, Range Hood and Oven
4. Cultured Marble Vanity Tops
5. Contemporary Fiberglass Shower with Seat
6. Moen Single-Control Faucets
7. Wall to Wall Carpeting
8. Installed T.V. Cable
9. Underground Utilities
10. Center Garage Door Cocks
11. Full Rain Gutter and Downspouts
12. Rear and Side Yard Fencing
13. 220V Wiring for Dryer
14. Double Medicine Cabinet in each Bath
15. Ceiling and Side Wall Insulation
16. Antiqued Glazed Kitchen Cabinets

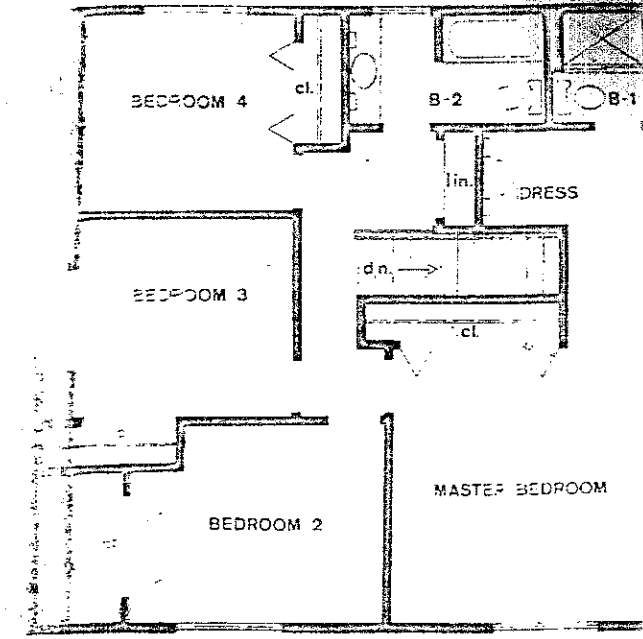
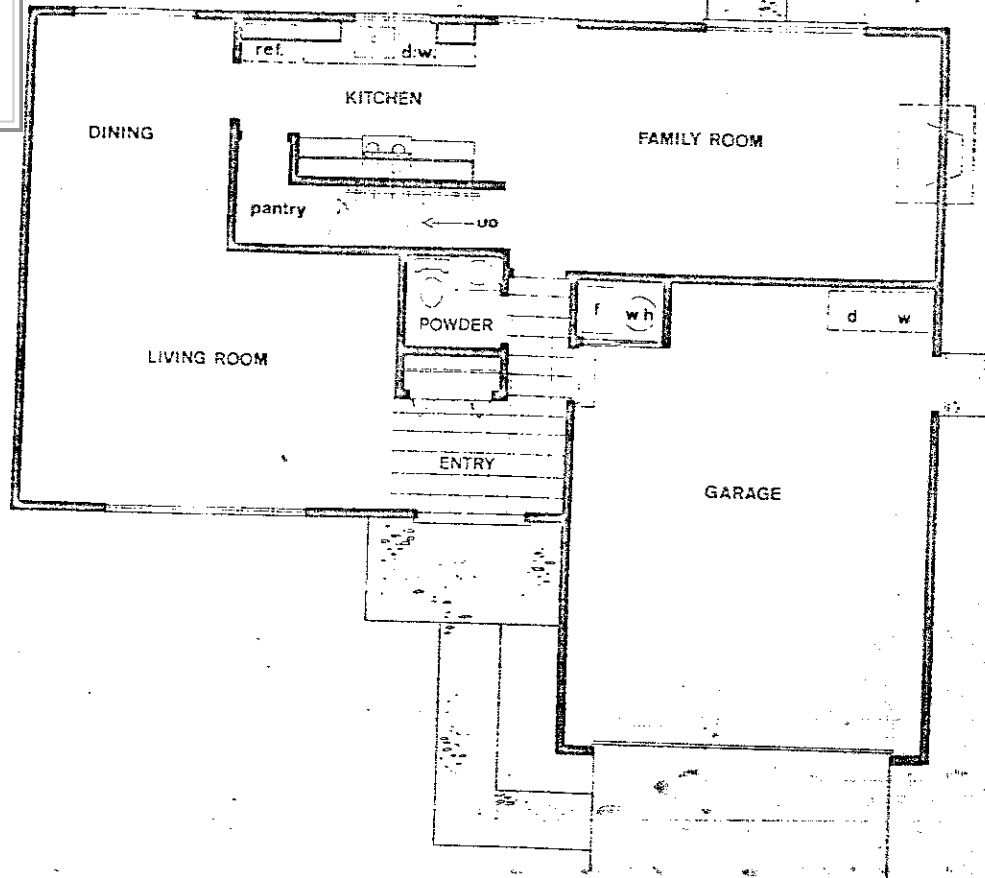
**The Greenbrier House**  
... For the Family That Lives Young





104' x 100'

**DOUG BUENZ**  
 THE 680 GROUP



# The Hill View House ...Where the Living is Easy

1. You can almost hear this spacious foyer saying "Welcome" the minute you come in. The large open living area is a perfect place for entertaining. The airy living room and separate dining area can be turned into a showcase for more formal entertaining. It has a door to the dining room

Note how you can enter the two-car garage without going outside. No extra steps carrying groceries, no getting wet when it's raining. And, of course, easy access to your washer-dryer facilities.

### US THESE ADDED VALUES . . .

- Dishwasher
- Garbage Disposal
- Range and Oven Unit with Range Hood
- Cultured Marble Vanity Tops
- Contemporary Fiberglass Shower with Seat
- Moen Single-Control Faucets

entertaining. The airy living room and separate dining area can be turned into a showcase for more formal entertaining. It has a door to the dining room

