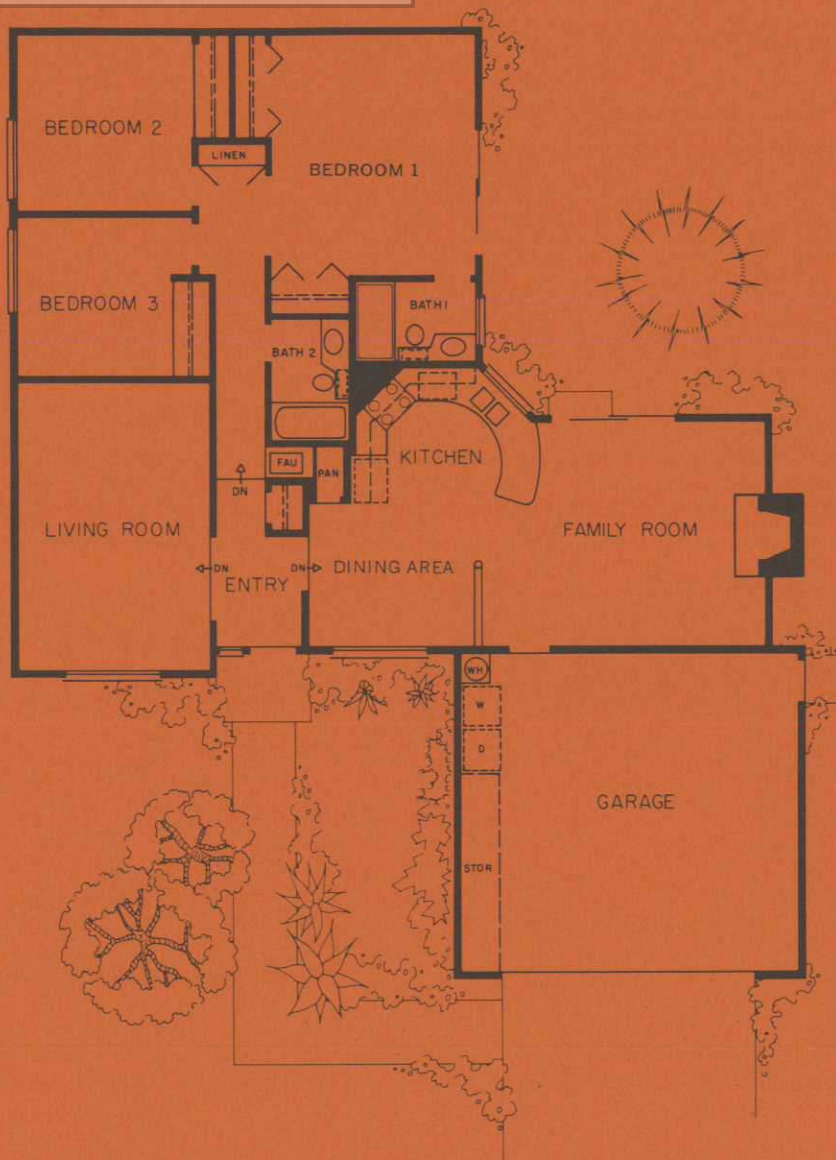


DOUG BUENZ

THE 680 GROUP

# THE SAN SIMEON



Here's a comfortable ranch-style house featuring a "curvilinear" kitchen which provides a new dimension for family living as well as entertaining. A gracefully curved counter extends into the family room, and also offers easy service to the dining area. The large, raised entry conveniently separates the living room from the dining area. And the master bedroom has its own full bath.

Plans, prices and specifications are subject to change without notice. Please ask your sales representative for complete, current information.



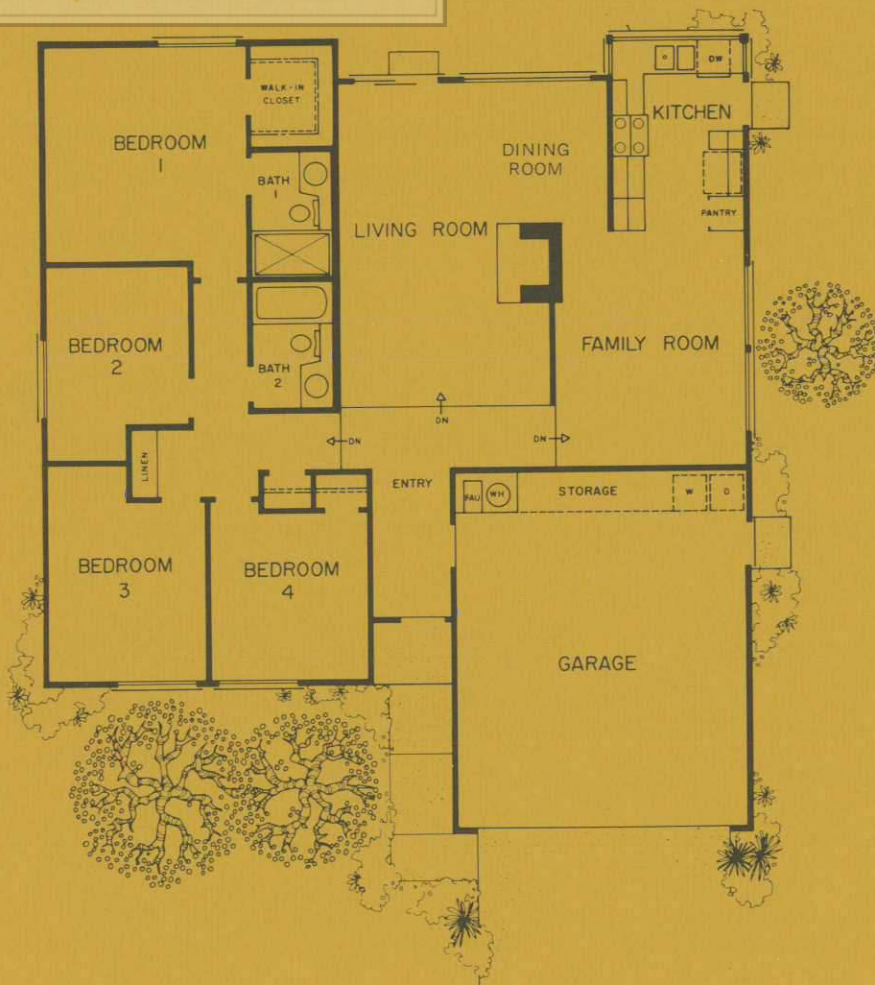
DOUG BUENZ

THE 680 GROUP

# THE CALIFORNIAN

Designed for California living, this roomy four-bedroom house features a dramatic free-standing fireplace to highlight the living and dining rooms. Sliding glass doors lead to the patio area and the family room can be entered directly from the large raised entry way. The U-shaped kitchen, designed for convenience and comfort, also has a pantry.

Plans, prices and specifications are subject to change without notice. Please ask your sales representative for complete, current information.

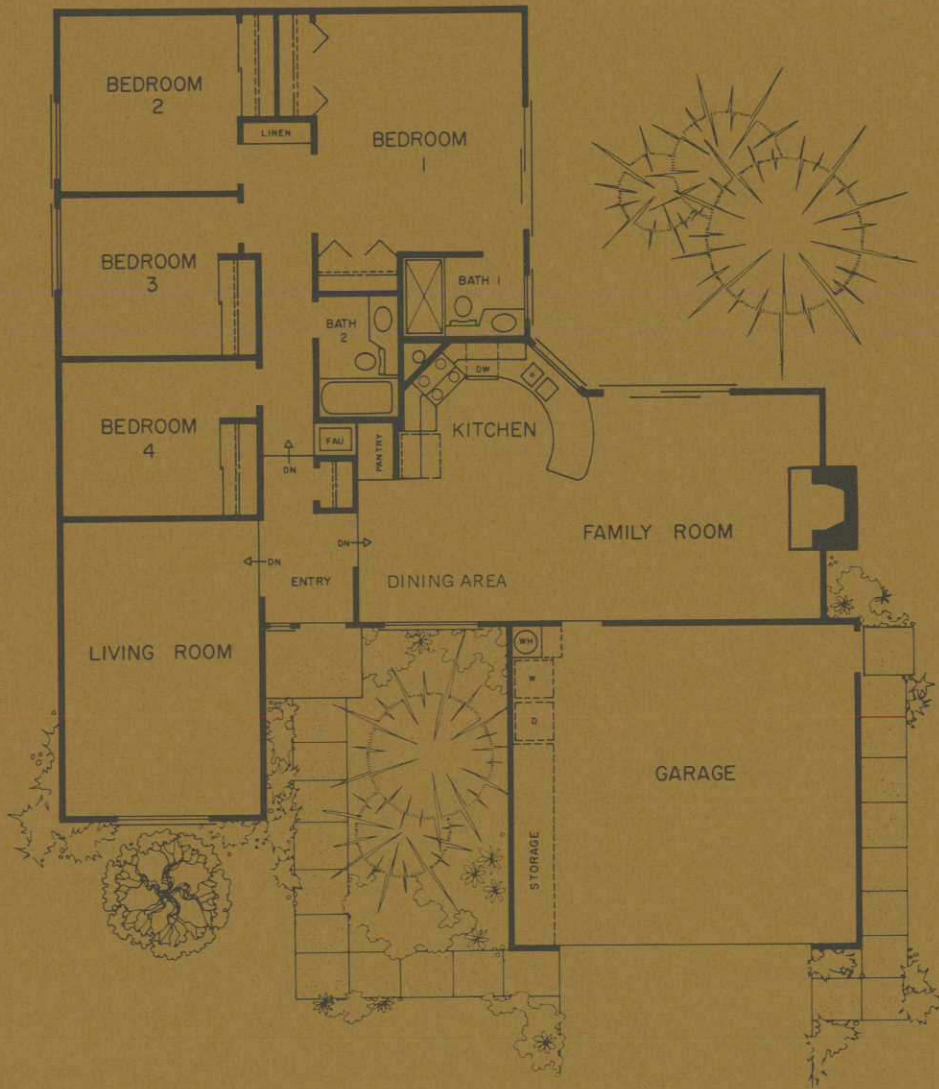




DOUG BUENZ

THE 680 GROUP

# THE MONTEREY



A set back entrance in this large "rancher" opens onto the sunken living room and dining room, at the same time providing direct access to the bedroom quarters. The spacious "curvilinear" kitchen also is a feature of this plan. Sliding glass doors in the family room and a pass-through window in the kitchen open onto the patio area for indoor-outdoor enjoyment.

Plans, prices and specifications are subject to change without-notice. Please ask your sales representative for complete, current information.





DOUG BUENZ

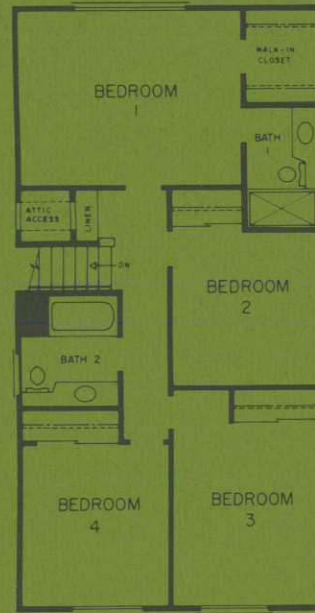
THE 680 GROUP

# THE NEWPORTER

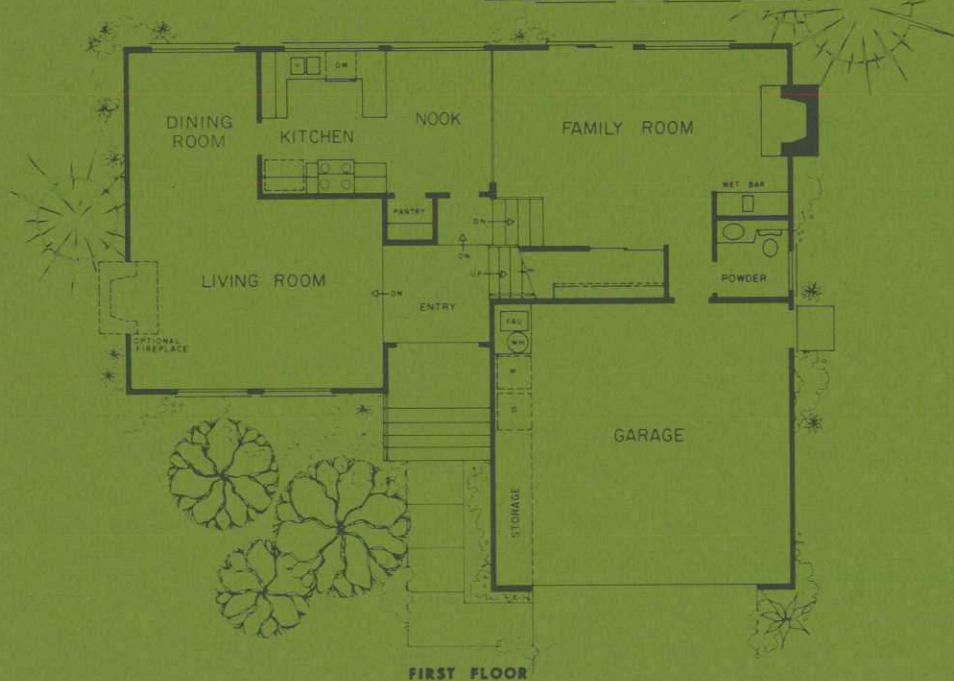
You may just fall in love at first sight with this handsomely designed tri-level home that boasts four bedrooms and two full baths on the second floor, and a step-saving powder room off the first floor family room. The raised entry way provides direct access to all levels. A breakfast nook, wet bar, and space for an optional fireplace in the sunken living room are added pluses for enjoyable living.

Plans, prices and specifications are subject to change without notice. Please ask your sales representative for complete, current information.

SECOND FLOOR



FIRST FLOOR

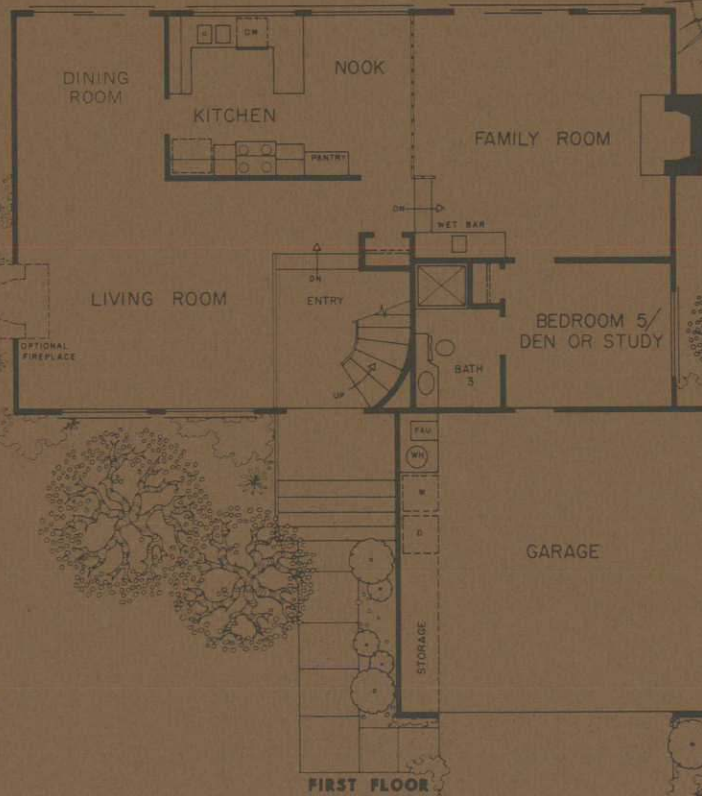
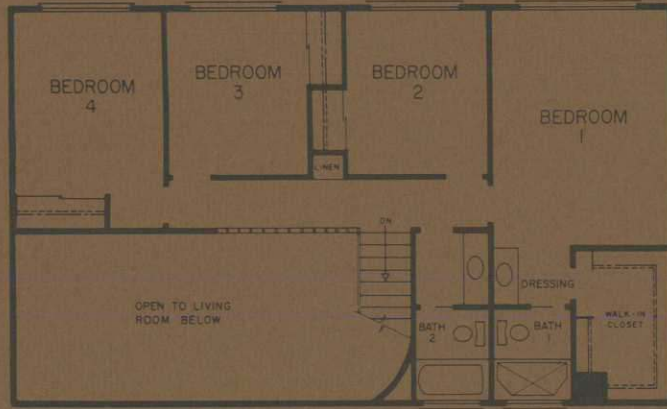


DOUG BUENZ

THE 680 GROUP

# THE ARCADIAN

SECOND FLOOR



FIRST FLOOR

A gracefully curving stairway to the second floor greets your eyes as you enter this unusually elegant split-level home. With five bedrooms and three full baths, it is ideal for the larger size family with a need for plenty of space. Other great features: A walk-in closet and dressing room off the master bedroom, efficient U-shaped kitchen with adjoining nook, wet bar—and so much more.

Plans, prices and specifications are subject to change without notice. Please ask your sales representative for complete, current information.

